

\* ADELAIDE  
\* FRINGE \* 2019

18 EXCITING  
SHOWS

IN THE AIR-CONDITIONED

BAKEHOUSE  
THEATRE

6 SHOWS PER NIGHT

some THAT WILL make YOU THINK, some THAT WILL  
make YOU LAUGH, and some THAT WILL DO BOTH

255 ANGAS STREET, ADELAIDE

WWW.BAKEHOUSETHEATRE.COM



• FringeTIX •

adelaidefringe.com.au  
1300 621 255

# SHOW PLANNER

	WEEK1 18-23 FEB	WEEK2 25 FEB - 2 MAR	WEEK3 4-9 MAR	WEEK4 11-16 MAR
STUDIO 6PM	Oysters	Oysters	Oysters	Oysters
MAINSTAGE 6PM	2100: A Space Novelty	2100: A Space Novelty	Final Placement	Last Year's Eve
STUDIO 7.30PM	The Forgettory	The Measure of a Man	Soft-Butch Show Queen	Septem
MAINSTAGE 7.30PM	All Change	All Change	Judas	Judas
STUDIO 9PM	The Professor	The Professor	Cockroach	Peter James Word Person
MAINSTAGE 9PM	The Crystal Club	Ego Jacket	The Crystal Club	The Crystal Club

## MATINÉES

### ALL THE LOVELY MAGDALENES

Mar 4-9 @ 12pm (Mainstage)

### MACBETH IN SPACE (AND TWO OTHER LOCATIONS)

Mar 4-9 @ 1pm (Mainstage)

### THE FORGETTORY

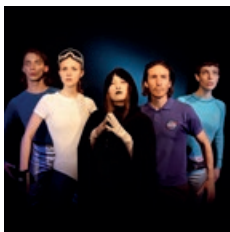
Feb 22 @ 3pm (Studio)

### SIR DAVID AND HIS ANIMALS

Mar 9-16 @ 4pm (Studio)

# 2100: A SPACE NOVELTY

presented by Cut Mustard (UK/Adelaide/Norway/Republic of Korea)



**FEB 18 - MAR 2 @ 6PM**

60 mins

**PREVIEW** Adults \$15, Conc \$12,

Ch \$5, Family \$35, Grp6+ \$13

**SEASON** Adults \$25, Conc \$20,

Ch \$15, Family \$65, Grp6+

\$22.50, Pass Holder \$15, BSA

\$19.50, FrM \$19.50 ChpTues \$20

---

**Winner of the "Pick of the Fringe" at the Norwegian Fringe Festival, Bergen, 2018.**

---

The year 2100. A hapless human, an unbeatable heroine and a Dark Lord bent on universal domination. An homage to all epic space adventures; let us take you on a mind-bending journey through multiple dimensions. There will be space travel. There will be aliens. There might be lasers. Join Cut Mustard for a hilarious low-fi extravaganza through outer space!



Mawson's  
The Vickers  
Chardonnay

# ALL CHANGE

presented by Smokescreen Productions and STARC Productions (UK/Adelaide)



**FEB 18 - MAR 2  
@ 7.30PM**

60 mins

Adults \$25, Conc/Preview/

ChpTue \$20, Ch \$20,

Family \$80, Grp6+ \$18,

BSA \$19.50, FrM \$19.50

---

**5 STARS "Funny, sad, touching and provocative" ★★★★★ LYNFA**

---

A poignant new comedy about the frailty of age. Ivor waits, his train of thought broken by his fragmented and decaying memory. His daughter Lily packs a bag, preparing him for life in a "home." But change is never easy and Ivor's not going quietly. As fast as Lily packs, he unpacks... as so the game begins...



Jim Barry  
'Watervale'  
Riesling

# THE CRYSTAL CLUB

presented by The DecaVita Sisters (Sweden)



**FEB 18-23,  
MAR 4-16 @ 9PM**

50 mins

All tix \$25

Welcome to a dazzling swing dance show with a roaring '20s flair! At the Crystal Club you will meet crazy flapper girls, passionate blues dancers, high flying Lindy Hoppers and a tipsy tap dancer, everything presented by our own sassy songbird Miss Madeline. An authentic, classy and humorous dance show for all jazz and swing lovers!



Mawson's  
The Vickers  
Chardonnay

# EGO JACKET

presented by Phillip Lee Curtis (VIC)



**FEB 25 - MAR 2 @ 9PM**

70 mins

**PREVIEW (MON 25) All tix \$16;**

ChpTue \$18;

**WED 27 & THU 28 Adults \$20,**

Conc \$16, BankSA \$15.75;

**FRI 1 & SAT 2 Adults \$22,**

Conc \$20, BankSA \$19.50

---

***"A powerful beyond belief performance... Curtis is a force to be reckoned with."*** STAGE WHISPERS

---

A persona that functions like a bulletproof vest. A disguise to Conceal the truth. By the age of 25 Phillip had lost 60 kilos, come out, had abdominoplasty, dealt with heartbreak and staged two shows about it, so you could say that all his troubles are behind him... right? Join Phillip Lee Curtis on an audio visual journey of self-discovery in this rock cabaret extravaganza that explores anxiety, self-sabotage and the deep internal void.



Oxford  
Landing  
Sauvignon  
Blanc

# FINAL PLACEMENT

presented by SPEECHBOX Theatre Productions (Adelaide)



**MAR 4-9 @ 6PM**

45 mins

Adults \$23, Conc \$18,

Grp6+ \$20, ChpTue \$21

In an Oklahoma welfare office, social worker Mary's plans for a much-needed weekend break are disrupted by the intrusion of Luellen, a young mother determined to win back her son.

By award-winning writer Ara Watson, this one-act play reflects on the contentious nature of the child welfare system and the emotional toll it takes on both worker and client.



The Hills  
Cider  
Company

## JUDAS

presented by Smokescreen Productions and STARC Productions (UK/Adelaide)



**MAR 4-16 @ 7.30PM**

60 mins

PREVIEW \$20

MAIN SEASON Adults \$25,

Conc \$20, Ch \$20,

ChpTue \$20, Family \$80,

Grp6+ \$18, BSA \$19.50,

FrM \$19.50

---

*"Immediate, contemporary and poignant... Homeland meets the Bible..."* THE HERALD

---

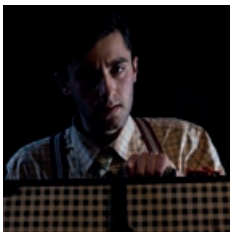
In a contemporary single-faith Middle Eastern state, a charismatic preacher with a radical message of peace emerges from the desert. As religious violence continues to tear the region apart, his followers are pursued, persecuted and imprisoned... And so a 21<sup>st</sup> century Judas is interrogated and ultimately forced to betray his leader, but is he really betrayer or betrayed, and who is ultimately pulling the strings?



Galway  
Shiraz

# LAST YEAR'S EVE

presented by Zac Kazepis (VIC)



**MAR 11-16 @ 6PM**

50 mins

Adults \$25, Conc \$20,  
BankSA \$19.50,  
Preview \$15, BSA \$10  
Companion Card \$0

*"...Exceptionally constructed and portrayed. 4 and a half stars"* ARTSHUB

*"...A heart rending story of displacement..."* MELBOURNE OBSERVER

Hugo was 8 years old when he came to the country as a refugee. He has spent the last 15 years of his life living and working in this place that he has slowly grown to call home. Tomorrow, Hugo will leave the country and never return.

Last Year's Eve is an original work by Zac Kazepis, which explores the themes of identity, friendship, family and isolation. This is a show about the past, the present, and an unknown future. This is a story about home.



Jim Barry  
'Watervale'  
Riesling

# ALL THE LOVELY MAGDALENES

presented by Scrambled Prince Theatre Co.-Eltham High School (VIC)



**MAR 4-9 @ 12PM**

50 mins

Adults \$20, Conc \$16,  
Family \$40, ChpTue \$15,  
BSA & FrM \$15.75,  
Groups (6+) \$15

Ireland's Magdalene Laundries for "fallen women" became infamous around the world following revelations of coercion, exploitation and the discovery of the mass graves of children. These institutions also operated in Australia. These are the stories of Melbourne's Magdalenes, explored through theatre and song.



Jim Barry  
Cover Drive  
Shiraz

# MACBETH IN SPACE (AND TWO OTHER LOCATIONS)



**MAR 4-9 @ 1PM**

60 mins

Adults \$20, Conc \$16,  
Family \$40, ChpTue \$15,  
BSA & FrM \$15.75,  
Groups (6+) \$15

presented by Scrambled Prince  
Theatre Co. – Eltham High  
School (VIC)

So, we had a seance, and William Shakespeare made contact. In fact he wouldn't shut up, until he'd dictated this updated version of Macbeth. It's sci fi, it's film noir, it's a Western and it's very funny, which is more than can be said about his first effort.

---

*"I am William Shakespeare  
and I approve this play."*

---



Yalumba  
Y Series  
Merlot

## OYSTERS

presented by Oyster Creatives (UK)



**FEB 18 - MAR 16 @ 6PM**

(not on Sundays)

60 mins

PREVIEWS (FEB 18 & 19) \$20;  
ChpTues \$20;  
MAIN SEASON Adults \$25,  
Conc \$20, Groups (6+) \$18,  
BSA \$19.50

---

*"Compelling and moving"*

BARBARA GELLHORN, MUSICIAN

---

A party celebrates Johannes Brahms' Violin Concerto's first performance. His friends are all there—loyal Herzogenberg, embittered Clara Schumann, waspish critic Hanslick. The evening unfolds in a series of passionate recriminations and farcical misunderstandings until its moving climax.

Laughing through our tears we ask—what is the cost of art?



Galway  
Shiraz

# THE FORGETTORY

presented by Tracy Crisp (Adelaide)



**FEB 18-23 @ 7.30PM**  
**MATINÉE**  
**FEB 22 @ 3PM**

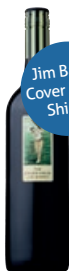
45 mins

Adults \$27, Conc \$22,  
Companion Card \$0

Alone in a new city, her last bottle of wine nearly empty, a woman drinks but can never forget. Meanwhile, on the other side of the world, her grandfather wanders the past, fighting to remember.

Told with Tracy Crisp's trademark blend of poignancy and humour, a compassionate story about a woman's identity, family memory, and ageing.

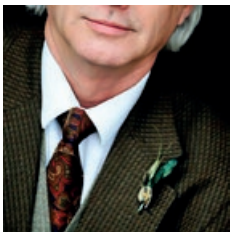
If we don't remember who we were, then who do we become?



Jim Barry  
Cover Drive  
Shiraz

# THE PROFESSOR

presented by Metropolitan Ensemble Theatre (USA)



**FEB 18 - MAR 2 @ 9PM**  
*(not on Sundays)*

60 mins

**PREVIEWS (FEB 18 & 19) \$10**  
**MAIN SEASON** Adults \$20,  
Conc \$18, Family \$15,  
BSA \$15.75,  
Pass Holders \$15.75

*"A refreshingly mischievous, inventive author."* THE TIMES OF LONDON

*"Paisley is charming and eloquent."* THE CLOTHESLINE

The university's most peculiar professor has made a remarkable discovery. He's thrilled—but why is his lecture today even stranger and wilder than usual? Come attend an odd, surreal comedy about Dickens, shipwrecks, the Venus de Milo, fainting poets, and the fate of Western Culture. Writer Brian Parks (*Imperial Fizz*), director John Clancy (*The Event*) and actor Bob Paisley (*Bill Clinton Hercules*) team up to bring this première to Adelaide.

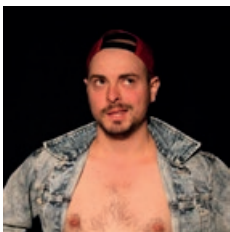


Galway  
Shiraz



# THE MEASURE OF A MAN

presented by Gavin Roach (VIC)



**FEB 26 - MAR 2**  
**@ 7.30PM**

50 min

Adults \$20, ChpTue \$10,  
BSA \$15.75

---

*"Roach is a strong performer. He is able to hold command over the stage."* GLAM ADELAIDE

---

*"...Roach has my attention... A bare stage, apart from one chair, is all that is needed as Roach begins his brave and sincere monologue."* STAGE WHISPERS

---

How do you measure a man? Is it the way he walks, the way he talks? Told in critically-acclaimed Gavin Roach's trademark humorous, raw and deeply candid style, *The Measure of a Man* will stare into the heart of one man's sexual anxieties and pull out the kinds of stories much LGBTI theatre shies away from—stories often shrouded in embarrassment or shame.



The Hills  
Cider  
Company

# SOFT-BUTCH SHOW QUEEN

presented by Mark J Wilson (VIC)



**MAR 4-9 @ 7.30PM**

55 mins

Preview (Mon to Wed) \$20,  
Adults \$24.50, Conc \$20,  
FrM \$18.38, Pass Holder \$20,  
BSA \$18.38

---

*"He delivers & his commitment is staggering."* THEATRE NOTES

---

*"Wilson does something with dialogue that no other performers are doing."* STEPHAN ELLIOTT, DIRECTOR OF PRISCILLA QUEEN OF THE DESERT

---

*The Soft Butch Show Queen* is a riotous, galloping ride as this comic mastermind and showman conjures 20 characters in a mind-blowing one-man show. Fasten your seat belts, stow your tray table. It's time to board the flight of the Soft Butch Show Queen. This summer the Soft Butch Show Queen is your good time girl.



Yalumba  
Y Series  
Merlot

# COCKROACH

presented by Melita Rowston and Leah Donovan (NSW)



**MAR 4-9 @ 9PM**

60 mins

Adults \$26, Conc \$21,  
Grp6+ \$23, FrM \$20.25,  
BSA \$20.25

**"Powerful, creative and unapologetic."** BROADWAY WORLD

**Nominated for Best Performance at Melbourne Fringe 2018.**

An amoral revenge tale for the #MeToo generation, *Cockroach* is a blackly comic prose-poem/grunge-cabaret about female anger. When C wakes from a nightmare she finds herself transformed into a monstrous vermin. For too long she's yearned to behave badly. Tonight's her night of reckoning! Disrupting Kafka and Ovid's *Metamorphoses* *Cockroach* explores the silencing following abuse and the transformations that occur from it. Furious, funny and hopeful.



# SEPTEM

presented by Eclipse Productions--(Adelaide)



**MAR 11-16 @ 7.30PM**

40 mins

Adults \$20, Conc \$18,  
Groups (6+) \$18

*Septem* is a dramatic stage play that shows the story of a group of individuals competing to win their share in fame and riches. The show runs for approximately 40 minutes and the play takes place in real time. "In front of you is a pill. Within the next 30 minutes one of you must take the pill. If after 30 minutes nobody has taken it, you will all die. Survivors will win their share of 50 Million Dollars... Good luck..."



# PETER JAMES—WORD PERSON

presented by Laughing Heart Comedy (QLD)



**MAR 11-16 @ 9PM**

60 mins

Mar 11-12 \$15,

Mar 13-16 \$20

---

***"Sharp as a tack and genuinely very funny"*** THE ADVERTISER

---

He may be young, but Peter James is no newbie when it comes to making people laugh. He's opened for some of Australia's finest comedians and now invites you to join him for an hour of wit, whimsy, stories and songs as Peter shows you that he's far more "Main Event" than "Opening Act." Sticks and stones will break his bones but words will never hurt him. Unless of course, those words are jokes and no one else has heard them. To have a limerick as a blurb might seem out of place, the only problem with this rhyme is I've run out of...



Jim Barry  
'Watervale'  
Riesling

# SIR DAVID AND HIS ANIMALS

presented by Clownfish (UK)



**MAR 9-16 @ 4PM**

*Wed 13 will be a relaxed performance*

60 mins

Adults \$25, Conc \$20, Ch \$12.50,

Family \$65, Grp6+ \$22.50,

BSA \$19.50, FrM \$19.50,

Pass Holder Discount \$10

---

***"The physicality of both performers was outstanding"; "The best animal documentary!"; "It was just so funny!"***

---

Audience quotes, FERMENT FORTNIGHT

You've all heard of the BBC's *Blue Planet* and *Planet Earth*. Tonight, we're thrilled to present to you the naturalist, national treasure and broadcasting legend, with a career spanning almost 100 years, Sir David Attenborough and his Animals!

Get ready for clowning, physical theatre and the largest range of animals you will ever see on stage.



The Hills  
Cider  
Company



DON'T BE A  
**TURKEY.**

We'll make your  
printing step out in

*Style*

## **WORLDWIDE NORWOOD**

Proudly supporting the Bakehouse Theatre  
in all things Fringe

33 Beulah Road, NORWOOD SA 5067

**T:** 08 8362 1777 **E:** [norwood@worldwide.com.au](mailto:norwood@worldwide.com.au)

**[worldwide.com.au](http://worldwide.com.au)**



**Worldwide**  
...more than just print



INTEGRATED  
MARKETING  
SOLUTIONS



ONLINE  
PRODUCT  
MANAGEMENT



CREATIVE  
DESIGN



PRINTING  
SOLUTIONS